

# Taylor County Schools

## Day 2

Fifth Grade



1. Complete this packet on the second ICE Day.
2. Write your name on the booklet.
3. Return this completed packet after the ICE Pack Day. You will keep the others in the envelope for future ICE Pack Days.

Name: \_\_\_\_\_



Solve each problem.

Answers

1)  $3,600 \div 400 =$  \_\_\_\_\_

2)  $(10 + 10) - 19 =$  \_\_\_\_\_

3) \_\_\_\_\_  $\times 10 = 7,842.71$

4)  $12.67 \div 10^4 =$  \_\_\_\_\_

5)  $2 \times 10 =$  \_\_\_\_\_

6)  $74,000 \div 10^4 =$  \_\_\_\_\_

7)  $98,000 \div 10^4 =$  \_\_\_\_\_

8) Find the value of the underlined digit.  
356,155.813

9) Write the expression below.  
Find the sum of 5 and 7 and then multiply 8

10) Write an equation to show the relationship between input and output.

In (q)	40	60	80	100
Out (r)	4	6	8	10

11) In the number 932,893.37 the 9 in the tens place is \_\_\_\_\_ the value of the 9 in the hundred thousands place.

12) Write in expanded form: 96.62

13) Write in word form: 539.843

14) Write as a numeral:

$3 + (1 \times \frac{1}{2}) + (7 \times \frac{1}{100}) + (1 \times \frac{1}{1000})$

15) six hundred seventy-nine and sixty-two hundredths =

- A. 679.62
- B. 679.062
- C. 976.26
- D. 976.62

1. \_\_\_\_\_

2. \_\_\_\_\_

3. \_\_\_\_\_

4. \_\_\_\_\_

5. \_\_\_\_\_

6. \_\_\_\_\_

7. \_\_\_\_\_

8. \_\_\_\_\_

9. \_\_\_\_\_

10. \_\_\_\_\_

11. \_\_\_\_\_

12. Use Line

13. Use Line

14. \_\_\_\_\_

15. \_\_\_\_\_

## Midnight Snack

The noises in the night seemed loud to Carole as she crept downstairs to get a midnight snack. Each step she took seemed to creak. The sound of the icemaker was loud as the frozen cubes fell from the tray. Carole did not want to wake up her mother. She knew her mother had worked an extra shift at the hospital, and she was tired. Carole had made her mother a tray of food and taken it to her room, but she had already fallen asleep by the time she carried it up to her. Carole had put a piece of chocolate cake on the tray for her mother. She couldn't help but think how good a piece of that cake would taste with a glass of cold milk. She just didn't want to wake up her mother as she attempted to grab her snack.

Carole breathed a sigh of relief when she finally made it to the kitchen. Standing in the middle of the room, she decided not to turn on the light. Instead, she would use the light from the refrigerator to help her see. She opened the door and pulled out the gallon of milk and then poured herself a large glass. She grabbed a tray from on top of the refrigerator and then put the tray on the counter before adding the glass of milk. After she put away the milk, she took the top cover off the cake plate and then cut herself a large slice of cake. She placed this on the tray before shutting the refrigerator and grabbing her tray. She couldn't believe she'd woken up so hungry, but she planned to take her midnight snack straight to her room.

The hall seemed dark after the light from the refrigerator. Carole was turning the corner to head up to her room when she saw someone coming down the hall. She recognized who it was immediately. "Mom! Did I wake you up?" Carole asked her mother.

"You didn't wake me," her mother said, "but your brother came in earlier to tell me good night and told me I missed out on some chocolate cake you tried to bring me. I kept dreaming about chocolate frosting, so I decided to make my dreams come true."

"I think I've got just what you need," Carole said, following her mother to the kitchen for a special midnight snack.

## Our Changing Sleep

Long ago, artificial light was not a part of people's lives. Once the day turned into night, without electric lights, the world they lived in became extremely dark. In some cases, that darkness also meant that it was dangerous to be outside. Who knew what might be lurking in the dark, waiting and watching? Because of the lack of light, people who lived long before you did the only logical thing they could do. They went to sleep.

Today's world has made our natural sleep patterns different than they were so many years ago. People's lives are no longer dictated by the hours the sun is out or the number of hours of darkness that nature provides. In fact, most people are constantly surrounded by some type of light source. Modern inventions, such as televisions and cellular phones, often put out light even when the lights are turned off. In some larger cities, there is so much artificial light that when there is a blackout of electricity and the city is thrown into darkness, people do not even recognize what they see in the night sky. For example, in 1994, there was an

earthquake in Los Angeles that caused the city to lose its artificial light. During the event, the police department received several similar calls from different residents in the city. These calls were to report a strange, silvery-looking cloud in the sky above the city. What was this strange shape hovering over Los Angeles during the dark hours of the night? It was the Milky Way galaxy, which is always in the night sky.

No one will deny the importance of Thomas Edison's invention of the lightbulb. Whether the addition of artificial light into the lives of mankind is always a good thing is up to each person to decide. Maybe if everyone could learn to turn off the lights and get enough sleep each night, then there would be no debate. One thing is certain: The sleeping patterns of humans were forever changed by the invention and increasing use of artificial light.

**UNIT 19**  
**QUESTIONS**

Name \_\_\_\_\_

Date \_\_\_\_\_

The following pages have questions based on the texts from Unit 19. You may look at the stories to help answer any questions. Use the back of the page if you need extra space for writing your answers.

1 Which statement is true about Carole's character?

- (a) She is selfish and doesn't want to help others.
- (b) She never wakes up during the night once she goes to sleep.
- (c) She is scared of the dark.
- (d) She cares about the people in her family.

2 Based on evidence from the text, explain your answer choice for #1.

---

---

---

---

3 What do the words *artificial light* mean as they are used in the following sentence?

**Long ago, artificial light was not a part of people's lives.**

- (a) light that is real
- (b) light that is not from a natural source
- (c) light that only comes from a flashlight
- (d) light that only occurs once it is dark outside

4 List one way Carole uses artificial light during the night.

---

---

5 According to the text, why did several people call the police during a blackout in 1994 after an earthquake occurred in Los Angeles, California?

- (a) They needed to leave the city.
- (b) They reported a strange cloud in the sky.
- (c) They wanted to know when the electricity would come back on.
- (d) They asked for the police to help find their missing pets.

**UNIT 19**  
**QUESTIONS**

Name \_\_\_\_\_

Date \_\_\_\_\_

- 6 Why is Carole being so careful to not wake her mother?
- a Her mother has worked two shifts and needs to get some sleep.
  - b Her mother has a big meeting the next day.
  - c Her mother has a bad headache and needs to get some sleep.
  - d Her mother has asked that no one in the family disturb her.
- 7 At the end of the story, why does Carole tell her mother she has just what she needs?
- a She has a room ready where her mother can go and get plenty of sleep.
  - b She can get her mother a piece of chocolate cake.
  - c She has some earplugs her mother can use while she is sleeping.
  - d She can get her mother some extra blankets for her bed.
- 8 Using evidence from the text, list two reasons why people's sleeping patterns were changed by the invention of artificial light.
- a. \_\_\_\_\_
- \_\_\_\_\_
- b. \_\_\_\_\_
- \_\_\_\_\_
- \_\_\_\_\_
- 9 Based on the text, give one reason why artificial light is not always a good addition to people's lives.
- \_\_\_\_\_
- \_\_\_\_\_
- \_\_\_\_\_
- 10 Which word choice could best replace the word *dictated* in the following sentence?
- People's lives are no longer dictated by the hours the sun is out or the number of hours of darkness that nature provides.**
- a changed
  - b ruled
  - c endangered
  - d focused

**Draw a picture of your favorite midnight snack.**

# Slave on the Expedition

The explorers were hungry. To survive, the explorers would have to trade with the Nez Perce for food. Who was the man sent to do the trading with the Native Americans? Who was the man who traded brass buttons cut off of military uniforms for three bushels of edible roots and some bread made of lily roots?

The trader's name was a slave named York. York was part of the Lewis and Clark expedition called the Corps of Discovery. The expedition began in 1804 and ended in 1806. The expedition's purpose was to explore the unmapped west. It started out in Saint Louis, Missouri. From there, it journeyed all the way to the Pacific Ocean and back.

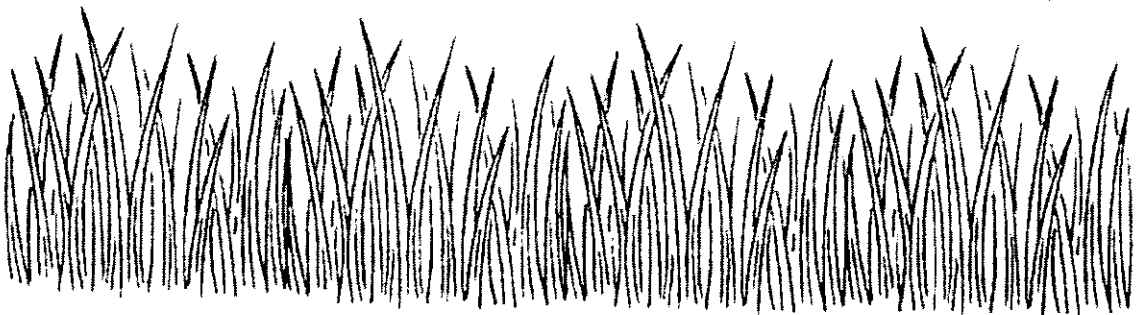
York was Clark's slave. Clark told York he had to go on the expedition. Clark needed him because he knew York could help. York was strong, and he was a good hunter. York was the only slave on the expedition.

York could not read or write. He could not record what he saw or felt. We know what York did because of what other men wrote in their journals. For example, one man wrote about hunting bison in his journal. He told how "one of our hunters killed one" and how York "killed two."

In one journal entry, Clark recorded how York swam to a sandbar in the middle of a river to gather greens for dinner. The explorer's diet was mostly meat, so York's greens were a real treat.



*explorers Meriwether Lewis  
and William Clark*





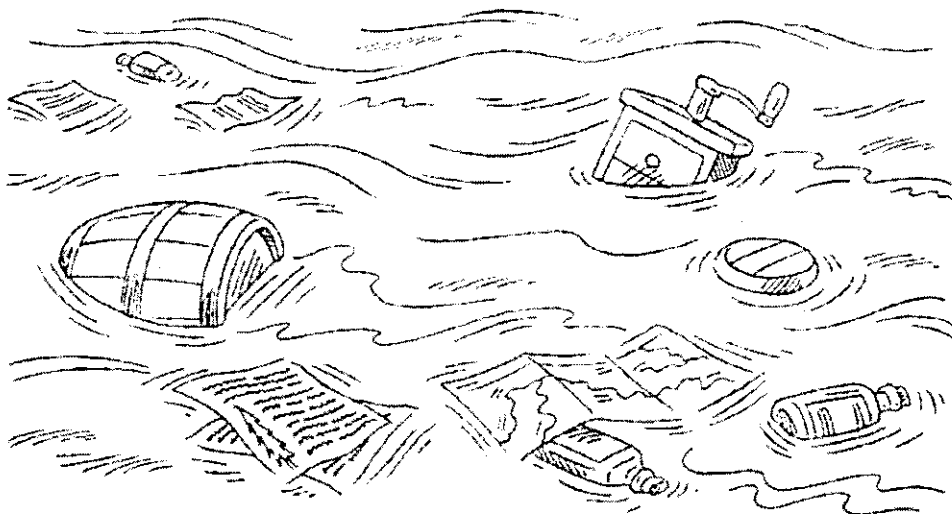
# The Woman Who Jumped In

My name is Sacagawea. I am a Shoshone Native American. I am the only woman who went with Lewis and Clark on their expedition to the Pacific Ocean. Often, as the men paddled their boats, I would walk along the shore. One time, a huge gust of wind sprang up, causing one of the boats to tip on its side. Men shouted and yelled as the boat's cargo slid into the water.

I wasn't sure what some of the cargo was for, but I knew it was precious to Lewis and Clark. As the desperate men tried to right the boat, I quickly jumped into the water and began to collect the items that were fast floating away. I saved medicines and strange-looking objects that the men looked through and at. I saved papers that the men made funny marks in every day.

There was one man on the expedition who looked like no other man I'd ever seen. His name was York, and his skin was black. York was very strong and a very good hunter. He took good care of Clark. He even searched Clark's blankets for fleas every day when we camped near the ocean!

The people we met were not scared of me because I was a woman with a child. They also liked York. They thought he was a great warrior. They gave him a special name and thought he was more powerful than his white companions because he was all black.



---

## Show What You Know

---

The following are questions based on "Slave on the Expedition" and "The Woman Who Jumped In." If needed, you may look back at the passages to answer the questions.

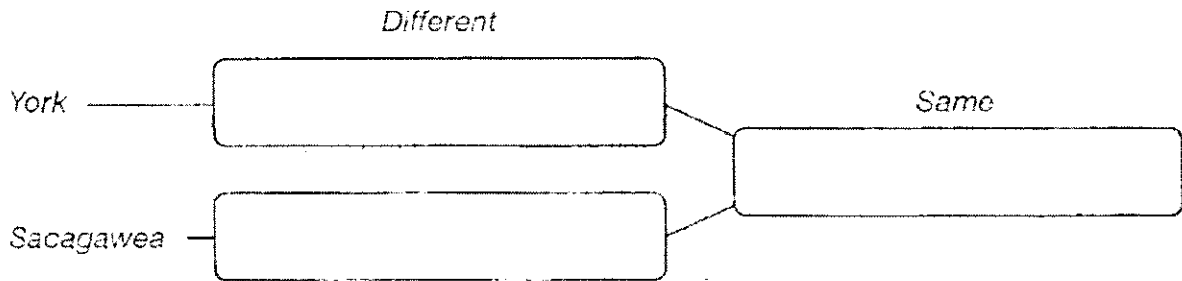
1. York traded brass military buttons for
  - (A) bread made out of oak roots.
  - (B) bread made out of pine roots.
  - (C) bread made out of lily roots.
  - (D) bread made out of green roots.
  
2. When Sacagawea jumped into the water, we do not know if she saved
  - (A) papers.
  - (B) blankets.
  - (C) medicines.
  - (D) strange-looking objects.
  
3. What are both stories about?
  - (A) people who were part of the Corps of Discovery
  - (B) the only black people in the Corps of Discovery
  - (C) the most powerful people in the Corps of Discovery
  - (D) all the people in the Corps of Discovery who could swim
  
4. York might have been sent to trade for food because the Nez Perce thought
  - (A) he was in the military.
  - (B) he could read and write.
  - (C) he knew what green things were edible.
  - (D) he was special because of his skin color.
  
5. How was Sacagawea most likely the same as York?
  - (A) She was a good hunter.
  - (B) She was a great warrior.
  - (C) She had her child with her.
  - (D) She could not read or write.

# Show What You Know (cont.)

6. List three things we know York did because of what was recorded in journals.

- a. \_\_\_\_\_
- b. \_\_\_\_\_
- c. \_\_\_\_\_

7. Fill in the boxes. Tell one way in which York and Sacagawea were different. Tell one way in which they were the same.



Write three or more sentences that tell what each story is about.

8. "Slave on the Expedition"

\_\_\_\_\_

\_\_\_\_\_

\_\_\_\_\_

9. "The Woman Who Jumped In"

\_\_\_\_\_

\_\_\_\_\_

\_\_\_\_\_

10. Tell why you think people were less fearful of Sacagawea than they were of others in the Corps of Discovery. Then, tell what you could do to make strangers less fearful of you. *(Use a separate piece of paper. Your answer should be at least one paragraph long.)*

# Geographical Landforms

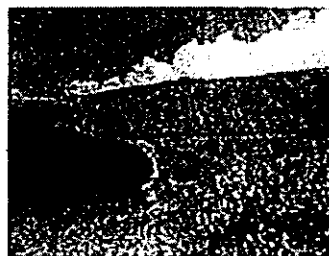
By Trista L. Pollard



along	groups	between	level
large	group	across	variety
rise	contour	lines	range
speed	larger	southern	well-known
ranges			

**Directions:** Fill in each blank with the word that best completes the reading comprehension.

The view of Earth from space must be very interesting. Imagine seeing the different colors, shapes, and structures on our planet. Well, thanks to nature, Earth has (1) \_\_\_\_\_! It has geographical **landforms**.



Landforms are physical features on Earth that are made by nature. These features are seen on maps and on globes. Landforms can be classified or put into two categories: **land** and **water**. We will start with water.

You know that oceans are (2) \_\_\_\_\_ bodies of saltwater. Well, **seas** also contain saltwater. However, they are smaller than oceans and are at least partially surrounded by land. Seas are usually located where the land and ocean meet. For example, the Caribbean Sea meets the land of **Central America** and **South America**. The islands of the **West Indies** are also in the Caribbean Sea. The Caribbean Sea empties into or joins the Atlantic Ocean. **Gulfs** are a part of an ocean or sea extending into the land. Find the **Gulf of Mexico** on a map near the (3) \_\_\_\_\_ **coast** of the United States. The states of Texas, Louisiana, Mississippi, Alabama, and Florida border the Gulf of Mexico. Do you see how the gulf extends inward from Texas and Florida? Rivers, **lakes**, and streams, as you know, empty into seas, gulfs, and oceans. Lakes are bodies of water that are surrounded by land. There are many lakes in the United States. Can you name the five **Great Lakes** that are on the northern border of the U.S.?

Coasts are the land that is near a sea or ocean. Two of the coasts in the U.S. are the Pacific Coast and the Atlantic Coast. The Pacific Ocean borders the U.S. in the west, and the Atlantic Ocean is its eastern border. Deltas are also found near coastlines. Deltas are areas of mud and sand that form at river mouths. This is where the mud and sand settle at the end of a river. The (4) \_\_\_\_\_ of the river slows down as it meets the larger body of water. Then the mud and sand it has been carrying is deposited there. One famous delta is found at the mouth of the Mississippi River in the southern U.S.

As you travel near coastlines, you may see peninsulas. Peninsulas are strips of land that are connected to (5) \_\_\_\_\_ bodies of land. They are surrounded by water on at least three of their sides. Florida is a peninsula. Islands are smaller bodies of land that are completely surrounded by water. Hawaii, one of our fifty states, is a (6) \_\_\_\_\_ of islands.

Moving away from water, we can now look at the physical features of the land. Let's start from flat land and work our way **higher**. **Plains** are flat areas of land that may have gentle rolling hills. There are very few trees on plains. The land stretches for miles. There are plains (7) \_\_\_\_\_ the Atlantic Coast and in the middle of the U.S.

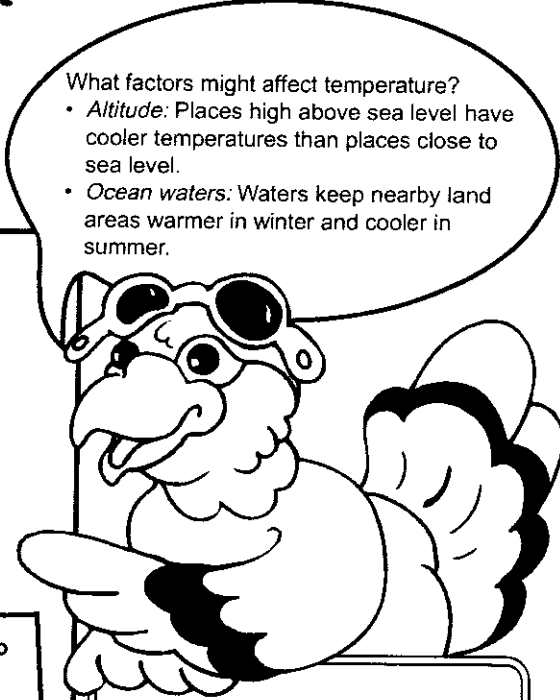
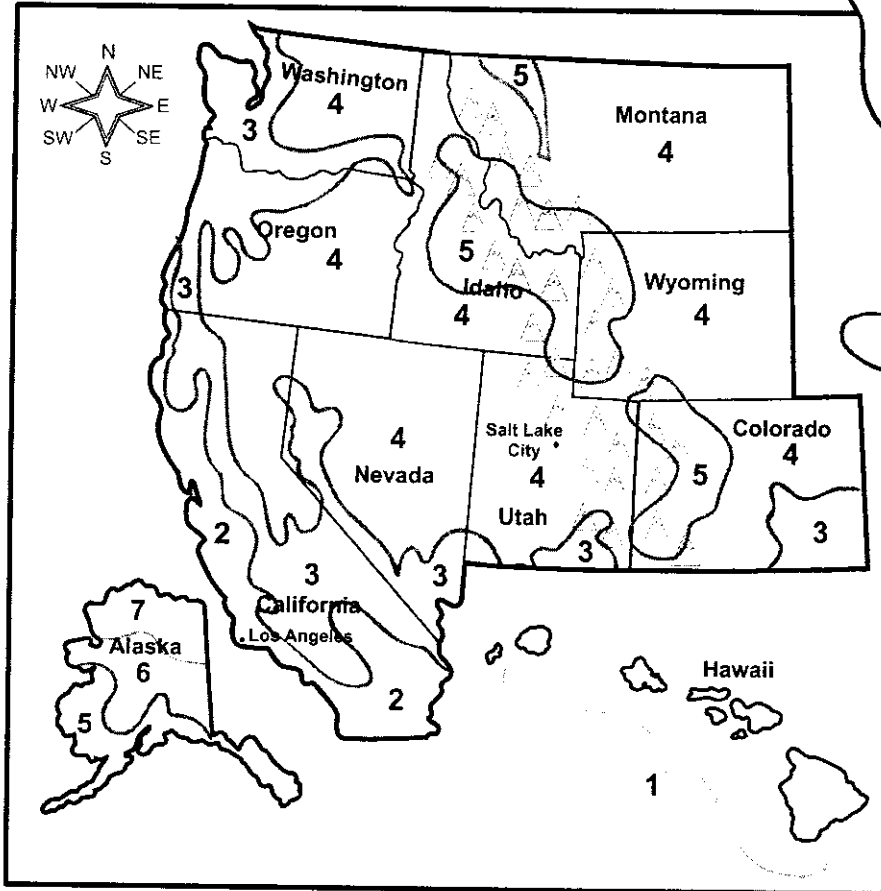
**Plateaus** and mountains have higher **elevations**. Elevation is the height of land above sea



## Winter Weather in the West

How low do the temperatures go during the winter season in the West? Complete the following activity to find out.

**Directions:** A weather map displays information such as rainfall, snowfall, and temperature. Study the weather map below and then answer the questions that follow.



What factors might affect temperature?

- *Altitude:* Places high above sea level have cooler temperatures than places close to sea level.
- *Ocean waters:* Waters keep nearby land areas warmer in winter and cooler in summer.

Average Winter Temperatures	
Degrees Fahrenheit	
Over 60	<input type="text" value="1"/>
45 to 60	<input type="text" value="2"/>
30 to 45	<input type="text" value="3"/>
15 to 30	<input type="text" value="4"/>
0 to 15	<input type="text" value="5"/>
-15 to 0	<input type="text" value="6"/>
Below -15	<input type="text" value="7"/>

1. Which western state has the warmest average temperature? \_\_\_\_\_
2. Which state has the coldest average temperature? \_\_\_\_\_
3. What is the range of temperature in the Rocky Mountains? \_\_\_\_\_
4. What is the average winter temperature in the southernmost portion of California? \_\_\_\_\_
5. What is the average range of temperature in Alaska? \_\_\_\_\_
6. What is the average winter temperature in Los Angeles? \_\_\_\_\_
7. What is the average winter temperature in Salt Lake City? \_\_\_\_\_
8. Which city has the cooler average temperature: Los Angeles or Salt Lake City? \_\_\_\_\_
9. What factors might cause the difference in temperatures of these two cities? \_\_\_\_\_



# Physical Education:

After you finish your reading:

Do push-ups for 1 minute

Do inch worms for 1 minute

After you finish your math:

Do curl-ups for 1 minute

Sit and reach for 1 minute

After you finish your social studies  
and science:

Run in place 1 minute

Do mountain climbers for 1 minute



## Activity # 2 All Levels of Art

1. An \_\_\_\_\_ artist is a person who can make art.
2. Many artists like to paint with water colors, while other artists like to use \_\_\_\_\_.
3. A) Where can I see some paintings?  
B) At the \_\_\_\_\_, of course!
4. A picture you draw is called a \_\_\_\_\_.
5. A picture you paint is called a \_\_\_\_\_.
6. Art that looks real is called \_\_\_\_\_.
7. Some artists, called sculptors, can make art from hard materials like rock. They make \_\_\_\_\_.
8. The \_\_\_\_\_ is the name of a famous painting by Leonardo da Vinci
9. People put paintings inside a \_\_\_\_\_ and then hang them on the walls.
10. If you want to learn how to draw or paint, you can take an \_\_\_\_\_.
11. \_\_\_\_\_ is very important in most kinds of art. Some examples are red, blue and green.
12. Artists use a paint \_\_\_\_\_ to add color to their paintings.
13. Artists usually make a quick drawing, or a \_\_\_\_\_, before they begin to paint.
14. Many children like to draw with \_\_\_\_\_.
15. Most \_\_\_\_\_ that was made in the last hundred years doesn't look realistic.

**WORD BANK**

artist   art class   art gallery   brush   color   crayons   drawing   frame  
 modern art   Mona Lisa   oil   painting   realistic   sculpture   sketch